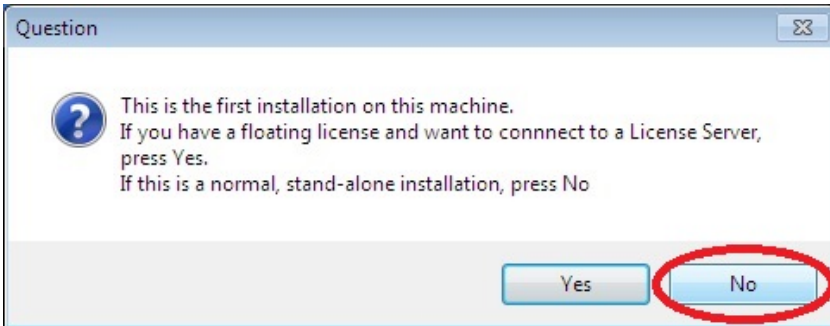


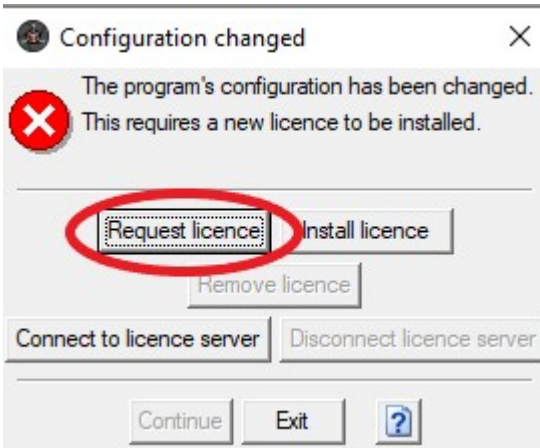
## TEMA Floating licence


1. Install TEMA on the server with the configuration code received from Image Systems AB.

When installing TEMA with a floating licence, the licence server is installed separately from the TEMA software. The server control files must be placed in a directory physically on the server machine. The licence server obtains a licence code from Image Systems AB that specifies the maximum number of simultaneous users. This number may be increased by obtaining a new licence code from Image Systems AB. During server installation, Click No in this dialogue.

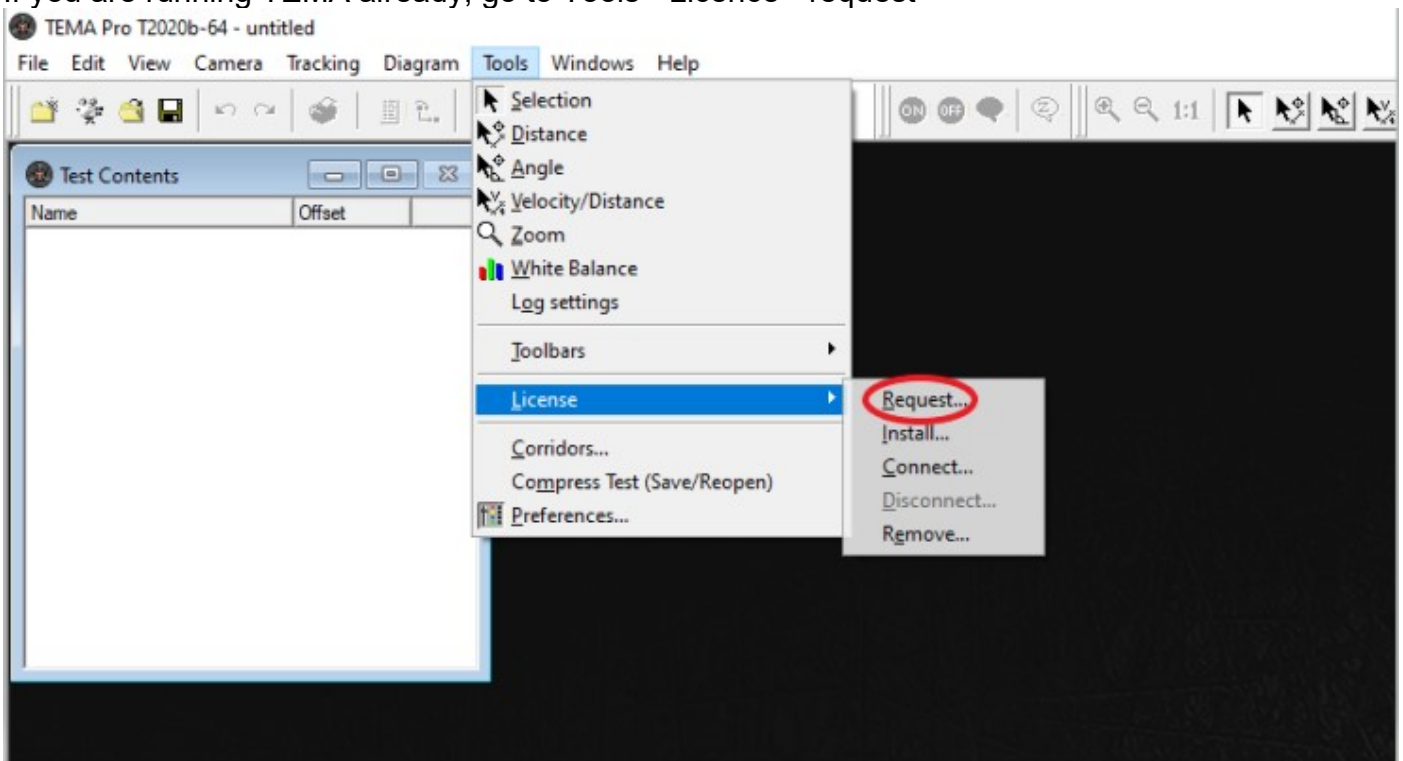


2. Start TEMA on the server. When this dialog appears, Click "request licence".



 If an error message appears regarding WMVCore.dll is missing, see more information at the end of this document.

If you are running TEMA already, go to Tools->Licence->request



- Type in Company, Country & Distributor/Agent, click “**Save**”, save the **request.txt** on your computer, attach this file in email & send it to [licensing@imagesystems.se](mailto:licensing@imagesystems.se)

Request a Licence Key

If you have purchased the program and are entitled to a licence or if you need more time to evaluate the product you can request a new licence key from Image Systems AB.

Use Save to create a file to be attached to an e-mail to [licensing@imagesystems.se](mailto:licensing@imagesystems.se) or as instructed by your local distributor. \* denotes mandatory items.

Company\*:

Computer name\*:

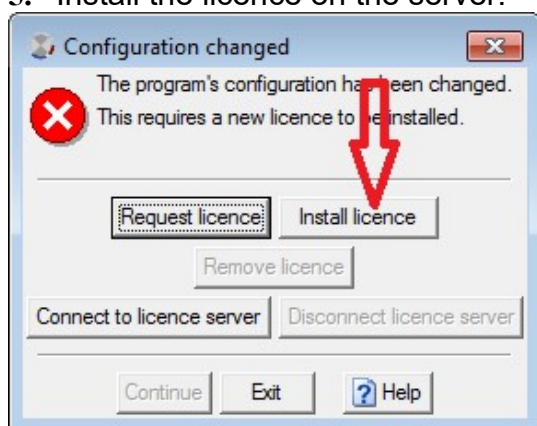
Country\*:

Distributor/Agent:

Save Close ?

- We will send you the floating licence back ASAP.

- Install the licence on the server.



The floating licence system relies on remote file transfer between a server computer (a Windows machine) and client computers. The server has service running that scans for licence requests in a specific directory. **The clients must have read and write access to this directory.**

- Create a share on the server for TEMA & give “Everyone full control”  
If you are not sure where you have installed TEMA, you can find it in the registry as "Licensedir" under the key: [HKEY\_LOCAL\_MACHINE\SOFTWARE\Image Systems AB\TEMA]

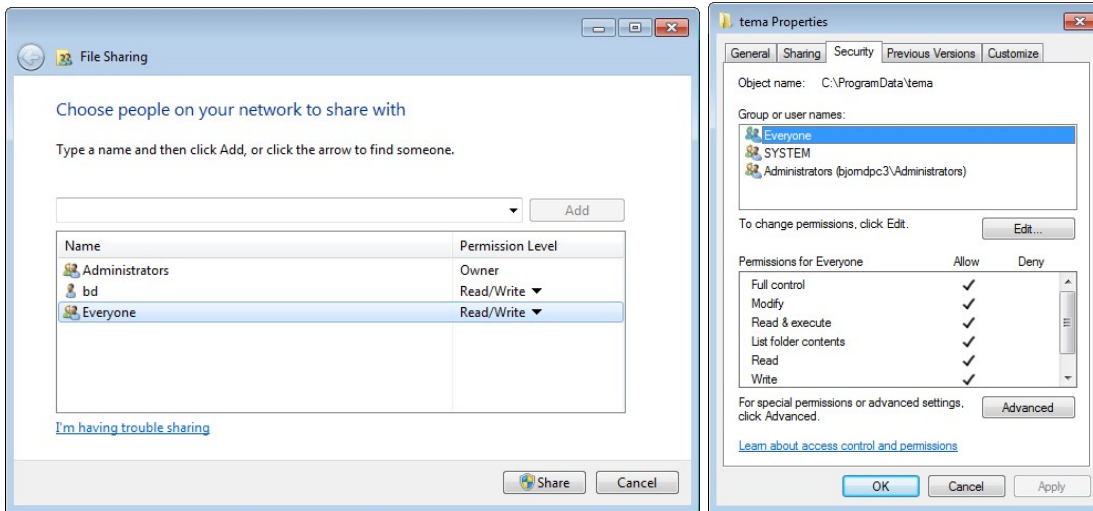
Floating License Server Directory
Win7 / Win8 / Win10 / Server 2007 / 2008 / 2012 / 2016 / 2019
C:\ProgramData\TEMA
Do NOT select Program Files folder
The "licensed" folder should be a child of one on these folders



### Checking for proper permissions settings:

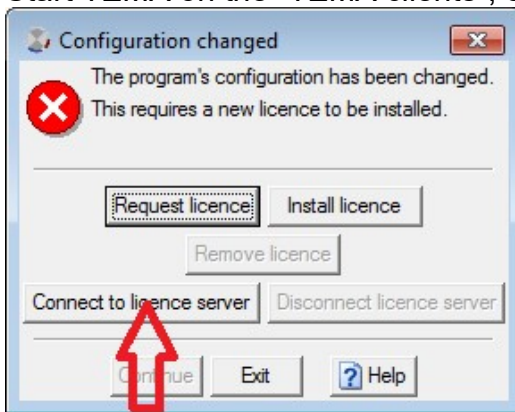
**From the client**, try to create a new text-file (right click->New->Text Document) in the shared directory subfolder ‘licensed’ **on the server**.

If you are allowed to do that, the permissions are set correctly.



7. Install TEMA with the same configuration code & version as the “TEMA server” on the “TEMA clients”.

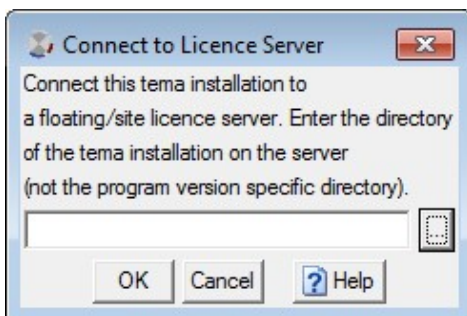
8. Start TEMA on the “TEMA clients”, click “**Connect to licence server**”

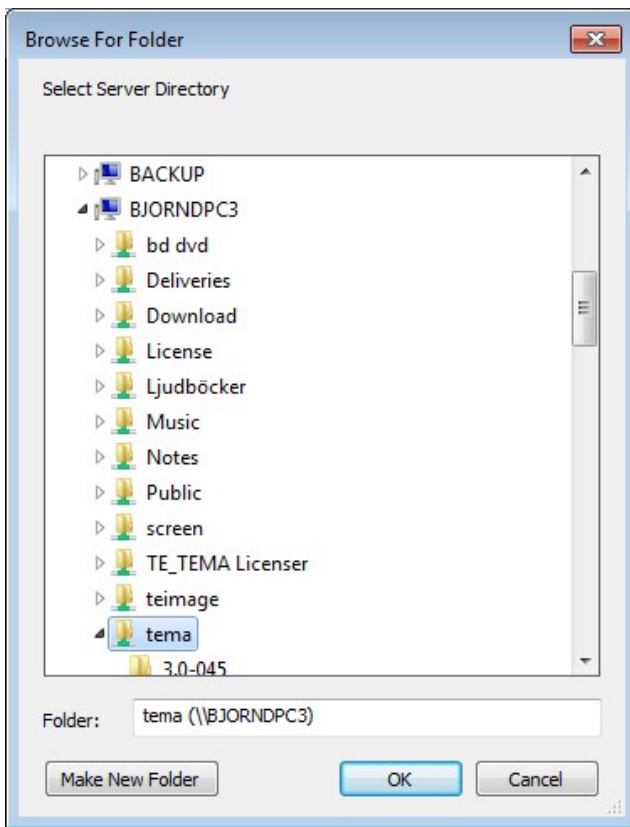


9. Browse to the shared directory where TEMA is installed on the “TEMA server”.

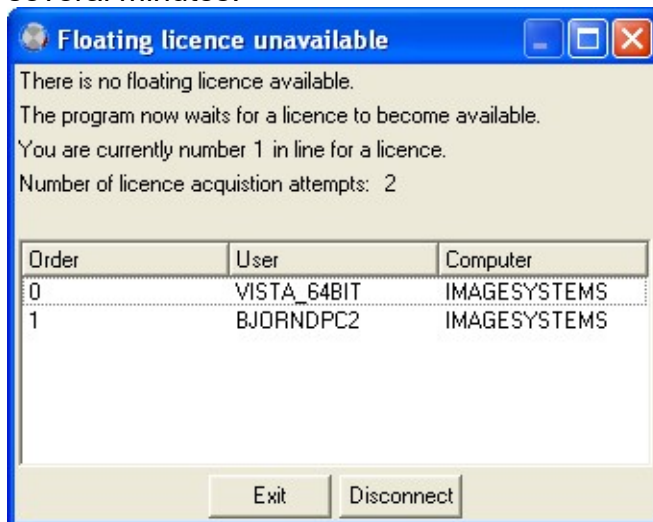
**NOTE!!!**

**The directory must be shared as “Everyone full control” to be visible.**





10. This “floating licence” allows TEMA running from different clients. “TEMA server” can also be used as a “TEMA client”.
11. If “TEMA server” must be rebooted the connected clients will get a warning that the server has gone down.
12. Each client installation needs to be able to access the server control directory. This means that the server must be online for any of the clients to operate. If there are no licences available when a client tries to obtain one, a warning message is displayed and the client repeatedly checks for licence availability.
13. Licences are assigned on a "first come, first served" basis. If a client computer or its TEMA system crashes, its assigned licence is returned to the licence server after a delay period of several minutes.





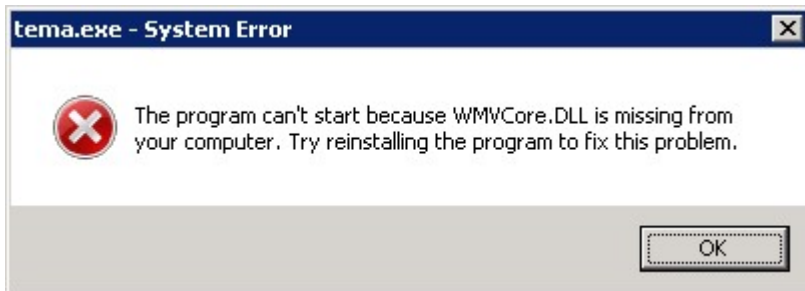
### NOTE!!!

Older versions of Windows Media can be 'redistributed' with wmfdist.exe.

This possibility is removed in later versions so we recommend customers to install WindowsMedia from Microsoft. In Vista/Win7 it seems like WindowsMedia is pre-installed.

On 2008 Server (as customers sometimes use for license server) WindowsMedia is not pre-installed.

If this error message appears when trying to start TEMA on the server.



For this purpose we provide **wmvcore.dll/wmasf.dll**.

The files are located here (after TEMA installation):

C:\Program Files (x86)\Image Systems AB\TEMA\Redist\WindowsMedia

-or-

C:\Program Files\Image Systems AB\TEMA\Redist\WindowsMedia

These two files makes it possible to start TEMA without installing the complete WindowsMedia.

Presently customers must copy these files manually to windows/system32 or where the tema.exe is located.

Image Systems AB  
Technical Support