

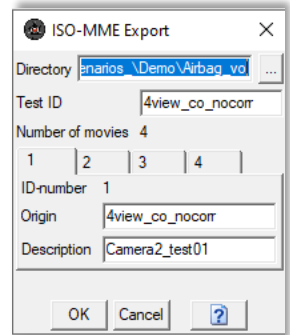


December 2020

Image Systems announces **TEMA T2021**, the latest release of the world leading software for motion analysis. This release introduces major improvements for digital image correlation and for the calibration of internal and external camera parameters.

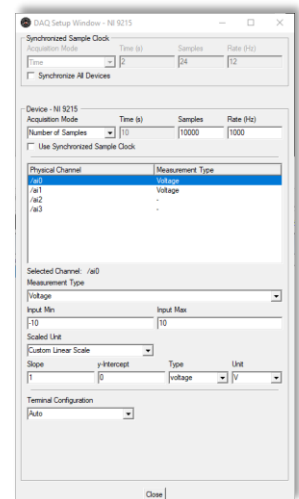
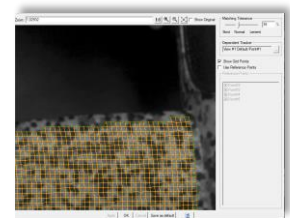
### TEMA CLASSIC

- **ISO MME export** of camera setup and image properties into a file structure
- **Automatic lens calibration** now included in default package.
- **Improved Data import:** Ascii import now allows to select an existing TEMA coordinate system in order to plot TEMA calculated data against external data.
- **Improved camera orientation:** It is now possible to output camera orientation from the lens calibration wizard, enabling one-step-stereo system calibration.
- **Body model** feature allowing to calculate the center of gravity of a group of points assuming various weights for each points of the group.



### TEMA PRO

- **ISO MME export** of camera setup and image properties into a file structure
- **DAQ integration:** Support of NI CDAQ 9174 along with sensor and control cards 9401/9402/9811/9215 for a fully synchronized system with analog sensor reading and camera triggering.
- **Major DIC improvements:**
  - Automatic stereo matching improved to handle lost cases (biefect, increase tolerance to worse calibration, epipolar line hit up from 3 to 6 pixels)
  - Possibility to manually help stereo matching using reference points (tolerance increased up to 12 pixels)
  - Preference for Strain Formulation to reduce bloat in diagram selectors and computation time.
  - Increased performance to reduce opening time on big tests
  - Setting up DIC tools (points of interest, virtual extensometers and inspection lines) can now be done on any frame of the sequence.
  - DIC Strain calculation improved for bending cases
- **Improved Data import:** Ascii import now allows to select an existing TEMA coordinate system in order to plot TEMA calculated data against external data.
- **Improved camera orientation:** It is now possible to output camera orientation from the lens calibration wizard, enabling one-step-stereo system calibration.
- **Automatic lens calibration:** Improved performances.
- **Body model** feature allowing to calculate the center of gravity of a group of points assuming various weights for each points of the group.



**+ 74** bug fixes and improvements of existing features for more stability

#### Contact:

- support@imagesystems.se
- +46 13 200 100
- Image Systems AB, Snickaregatan 40, S-582 26 Linköping - Sweden
- www.imagesystems.se

